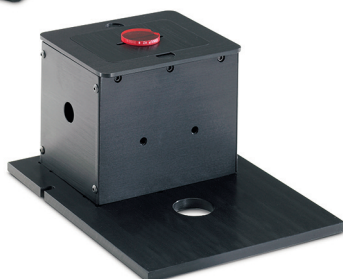


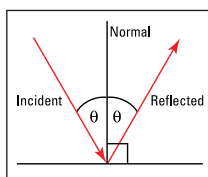
The Thermo Scientific Fixed Angle Specular Reflectance Accessories offer high performance and accuracy for the measurement of glossy or mirrored surfaces at fixed angles.

Thermo Scientific Fixed Angle Specular Reflectance Accessories

For Evolution series spectrophotometers



The Fixed Angle Specular Reflectance line of accessories for the Thermo Scientific Evolution UV-Visible spectrophotometers measure specular reflectance at 8°[†], 15°, 20°, 30°, 45°, 60° and grazing angle[†]. Specular reflectance is “mirror like” reflectance off a surface, i.e. the angle of reflectance is the same as the angle of the incident beam.



The specular reflectance properties of coatings on transparent and opaque surfaces help define accuracy of the coating procedure and the performance of coated materials.

Whether your coating is:

- An antireflective coating on eyeglasses or binocular lenses
- A UV mirror on a cockpit window
- A solar reflective window for skyscrapers
- A metal first surface mirror for research laser tables
- A gloss paint
- The rear reflector for a spot-lamp
- An antireflective coating for stacks of stepper lenses for photolithography
- A military pilot's helmet visor
- Or any other research, military or production reflector

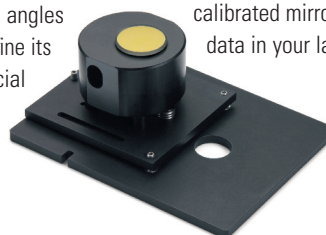
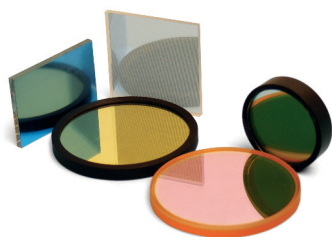
...the reflectivity at critical angles and wavelengths helps define its performance and commercial success.

Sophisticated Design for Measuring Advanced Coating Performance

With these accessories, you can measure advanced coating performance at the angles that matter to you. Plate and automotive glass may be treated with coatings to enhance reflection of UV or IR wavelengths for interior safety and climate control. Optical elements are often anti-reflective (AR) coated to enhance performance. Laser mirrors must be highly reflective at the laser wavelength to prevent beam energy loss and substrate heating. How well do your specialty glasses and coatings perform at the angles that matter to you or your customer?

Near-normal Measurements for Demanding Applications

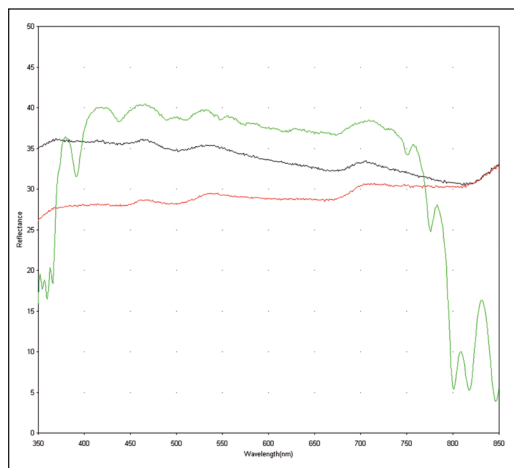
Whether you're developing new products or performing QA/QC measurements on reflective surfaces as they leave or enter your facility, *near-normal* reflectivity measurements tell you how your surface performs under direct observation. The 8° *near-normal* specular reflectance accessory (SRA) comes mounted on an Evolution™ baseplate and installs directly into the sample compartment[†] for a secure and reproducible fit. Align the accessory once and enjoy optimized performance every time you install it. Use a reference piece or calibrated mirror to get absolute reflectance data in your laboratory.



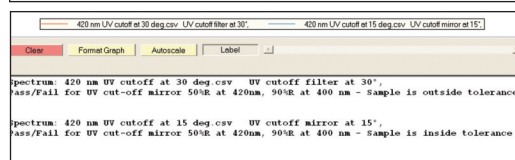
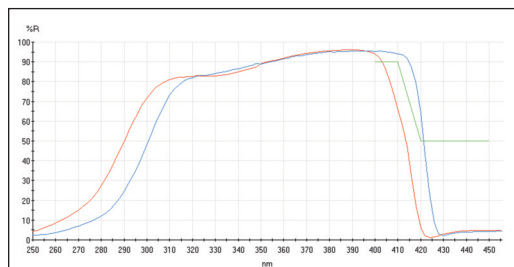
[†] Available only for the Evolution 300 and 600 spectrophotometers.

Specific Angles for Special Applications

- Mirrors operating at 45° on laser tables are required to direct the beam through experiments in research applications.
- Hot mirrors and cold mirrors have different cut-on and cut-off wavelengths depending on the angle of incidence. How does a shift from 30° to 45° affect your product?
- For chemists and surface scientists, grazing angle (85°) measurements† give the longest possible path through adsorbed or chemically fixed thin films on a surface.
- Film thickness measurements can be performed at any known angle.



Thermo Scientific VISION^{pro} shows measurements taken on a 30° Specular Reflectance accessory that support a manufacturer's claim that its new mirror (green) is 40% more reflective than a conventional rhodium mirror (red). An aluminum first-surface mirror (black) of known reflectivity is included as a reference.



Thermo Scientific VISION/ite MaterialsCalc performs QA/QC for UV cutoff mirrors

Slide-in Mounting in the Solid Sample Holder

SRAs with fixed angles of 15°, 20°, 30°, 45° and 60° fit in the Solid Sample Holder and are quickly and easily interchanged for measurements at different angles. An optional second slide mount allows you to condition the light by placing a filter or polarizer before or after your sample. The Thermo Scientific line of fixed angle SRAs gives you access to the fixed angles you need with less storage space and lower initial cost.

Specifications

Mask apertures	8°	12 mm diameter circle
	15°, 20°, 30°	4 mm × 7 mm
	45°, 60°	4 mm × 13 mm
	85°	4 mm × 20 mm
Optics	MgF ₂ coated, UV-enhanced aluminum mirrors	

Product Information

Product Information	Part Number
Evolution 600 PC-controlled spectrophotometer	10600XXX
Evolution 300 PC-controlled spectrophotometer	10300XXX
Evolution 220 PC-controlled spectrophotometer	840-210600
Solid Sample Holder (to mount fixed angle SRAs 15° – 60°)	222-261700
8° Near-normal Specular Reflectance accessory	222-244800
15° Specular Reflectance accessory (requires 222-217200)	222-233500
20° Specular Reflectance accessory (requires 222-217200)	222-233600
30° Specular Reflectance accessory (requires 222-217200)	222-219500
45° Specular Reflectance accessory (requires 222-217200)	222-219600
60° Specular Reflectance accessory (requires 222-217200)	222-233700
Grazing Angle Specular Reflectance accessory	268-835500
Specular Reflectance Standard (near-normal measurements)	222-219900

Software Packages

Software Packages	Part Number
VISION ^{pro} software	10040101
VISION/ite MaterialsCalc software	869-124500
REPORTER SPX software	869-127400

Feature Packed Software for Control and Calculation

VISION^{pro}™ or Thermo Scientific INSIGHT software give the user complete control of the instrument for alignment and method development. Optional VISION/ite™ MaterialsCalc software† presents a simplified scanning interface and access to a suite of calculations for materials applications.

Wavelength Measurement Range

Wavelength Measurement Range	Part Number
Evolution 201/220	190 – 1100 nm
Evolution 300	190 – 1100 nm
Evolution 600	190 – 900 nm

† Available only for the Evolution 300 and 600 spectrophotometers.

www.thermoscientific.com

©2008-2011 Thermo Fisher Scientific Inc. All rights reserved. All trademarks are the property of Thermo Fisher Scientific Inc. and its subsidiaries. Specifications, terms and pricing are subject to change. Not all products are available in all countries. Please consult your local sales representative for details.

Africa-Other +27 11 570 1840
Australia +61 3 9757 4300
Austria +43 1 333 50 34 0
Belgium +32 53 73 42 41
Canada +1 800 530 8447
China +86 10 8419 3588
Denmark +45 70 23 62 60

Europe-Other +43 1 333 50 34 0
Finland/Norway/Sweden +46 8 556 468 00
France +33 1 60 92 48 00
Germany +49 6103 408 1014
India +91 22 6742 9434
Italy +39 02 950 591

Japan +81 45 453 9100
Latin America +1 561 688 8700
Middle East +43 1 333 50 34 0
Netherlands +31 76 579 55 55
New Zealand +64 9 980 6700
Russia/CIS +43 1 333 50 34 0
South Africa +27 11 570 1840

Spain +34 914 845 965
Switzerland +41 61 716 77 00
UK +44 1442 233555
USA +1 800 532 4752



Thermo Electron Scientific Instruments LLC,
 Madison, WI USA is ISO Certified.

PS51651_E 06/11M

Thermo
 SCIENTIFIC