

Monarch II™ - Multi-spectral Camera

Add-On Assembly Guide

Document Details



Purpose	Add-On Assembly Guide for the Monarch II EVK
Scope	UNS Monarch II - UNS54000 Multispectral Camera
Document number	UNSDOC5024
Revision number	Rev 00
Responsible Engineer	Ohad Hayoun
Date	12/29/2021
Security level	Confidential

Table Of Contents

1. Parts List	3
2. Lens Cover	4
3. Tripod Add-On Assembly Instructions	5
4. Mobile Phone Add-On Assembly Instructions	6
5. Cable Add-On Assembly Instructions.....	7
6. Tripod & Cable Add-Ons Assembly Instructions	8
7. Mobile Phone & Cable Add-Ons Assembly Instructions	10
8. Spectralon Add-On	12

1. Parts List

The MONARCH assembly kit contains the following parts:

<p>1. Monarch Camera</p> 	<p>2. Mobile Phone Add On</p> 	<p>3. Tripod Add On</p> 
<p>4. USB Cable x2</p> 	<p>5. Cable Add On</p> 	<p>6. M2 Screw Set x 8</p>  <p>x4 long + x4 short</p>
<p>7. Spectralon (Gray material with 50% NIR reflection)</p> 		

2. Lens cover

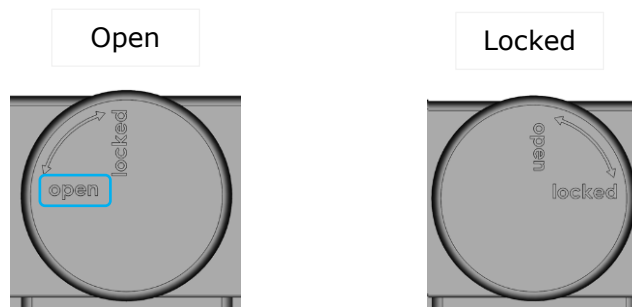
3.1 2.1 The new lens cover's purpose is to protect the camera lens from dust while the camera is NOT in use.

3.2 The cover should be removed only when using the camera.



3.3 lens cover removal instructions

- **Open** - Rotate the cover until the "open" sign is shown horizontally and pull out the cover.
- **Lock** - Insert the cover when the "open" sign is shown horizontally and rotate it to lock.



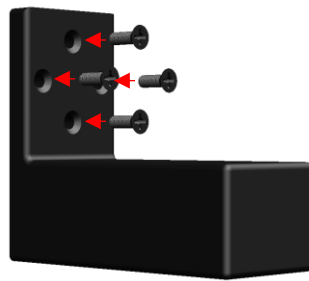
Note:

Please keep the cover in a safe place while it's not attached to the camera.

3. Tripod Add-on Assembly Instructions



3.4 Insert the 4 short screws into the designated slots in the back of the Tripod Add On



3.5 Place the screws into the according threads in the back of the MONARCH camera and screw in tightly.



4. Mobile Phone Add-on Assembly Instructions



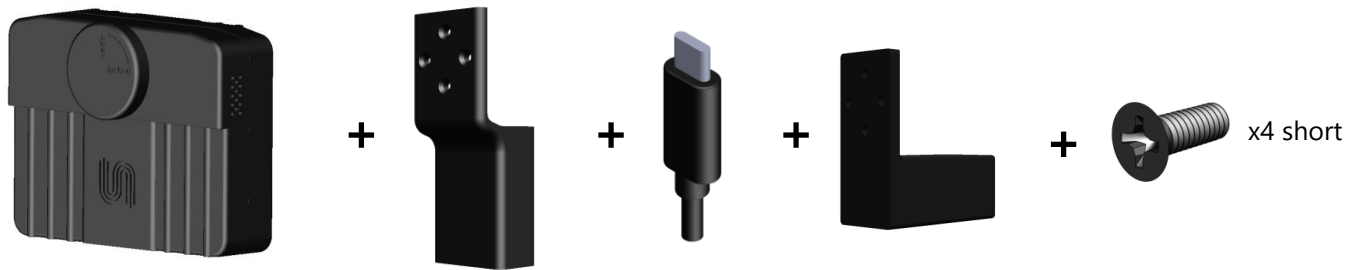
3.1 Insert the 4 short screws into the designated slots in the back of the Mobile Phone Add On.



3.2 Place the screws into the according threads in the back of the MONARCH camera and screw in tightly.



5. Cable Add-on Assembly Instructions

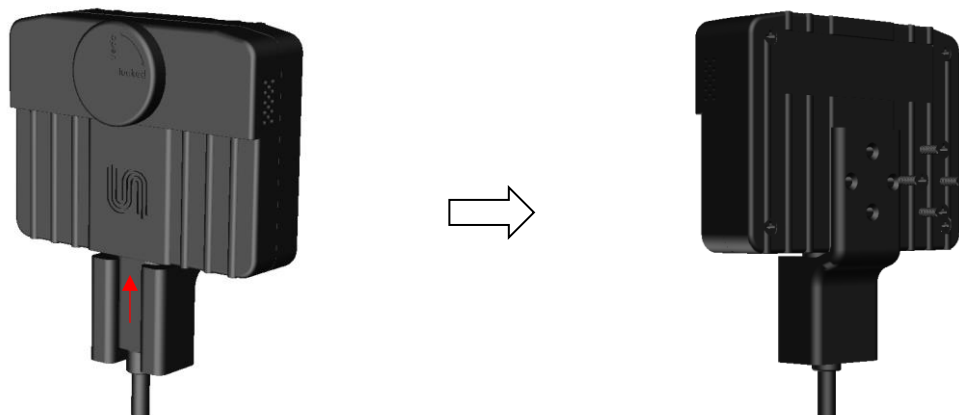


3.3 Place the USB cable in the designated slot in the Cable Add On, flat surface of the USB plug facing up.

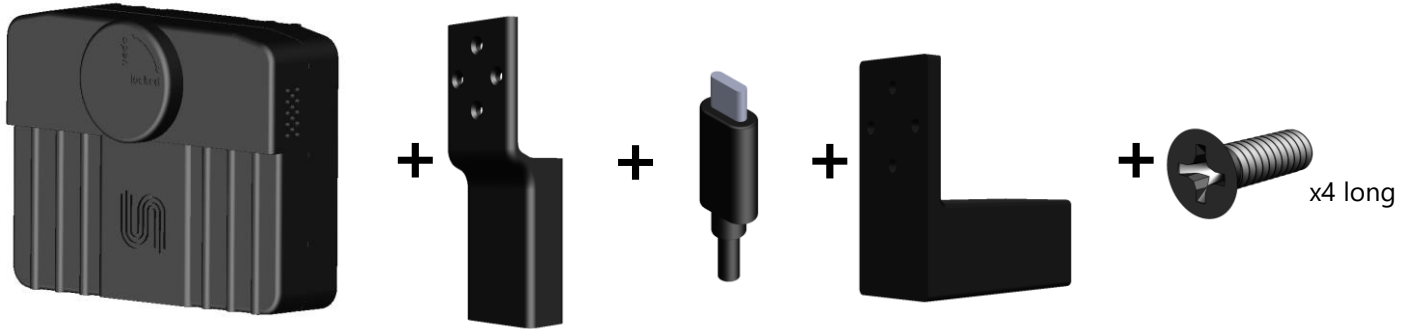


3.4 Connect the USB Cable while in the add on to the MONARCH Camera.

3.5 Insert the 4 short screws into the designated slots in the back of the Cable Add On, threading into the MONARCH Camera threads, and screw in tightly.



6. Tripod & Cable Add-Ons Assembly Instructions



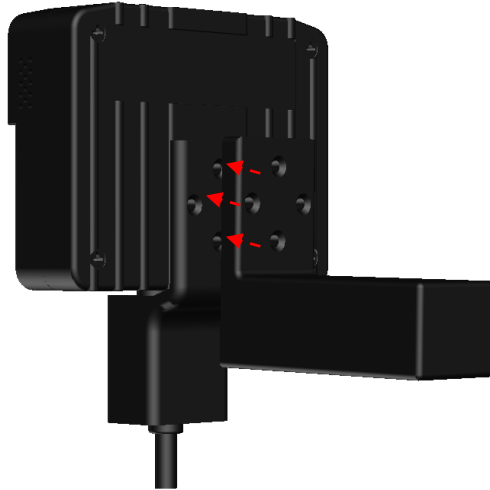
5.1 Place the USB cable in the designated slot in the Cable Add On, flat surface of the USB plug facing up.



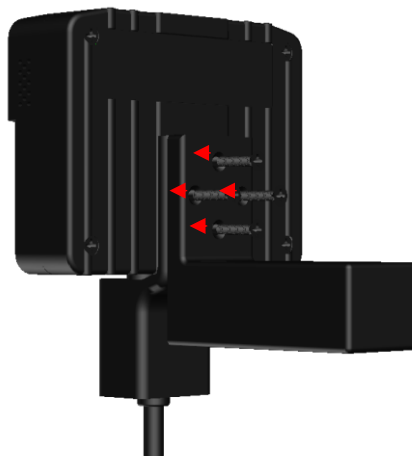
5.2 Connect the USB Cable while in the add on to the MONARCH Camera.



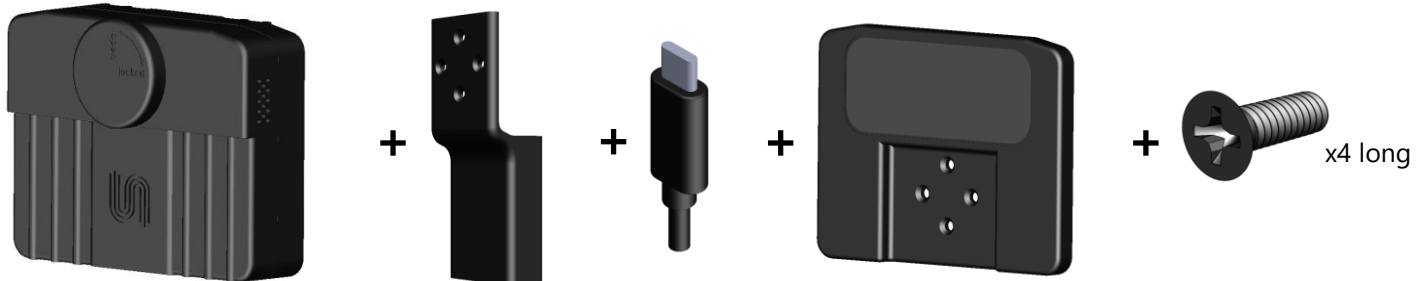
5.3 Place the Tripod Add On top of the Cable Add On so the slots are aligned



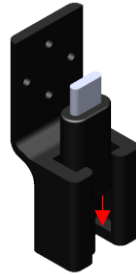
5.4 Insert the 4 long screws into the designated slots in the back of the Cable Add On, threading into the MONARCH Camera threads, and screw in tightly.



7. Mobile Phone & Cable Add-Ons Assembly Instructions



6.1 Place the USB cable in the designated slot in the Cable Add On, flat surface of the USB plug facing up.

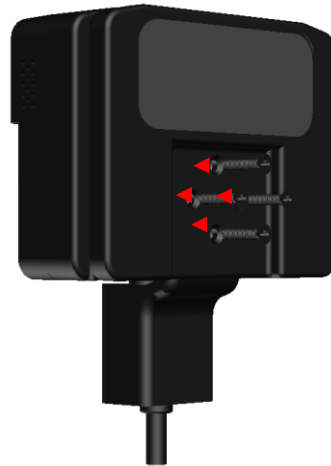


6.2 Connect the USB Cable while in the add on to the MONARCH Camera.



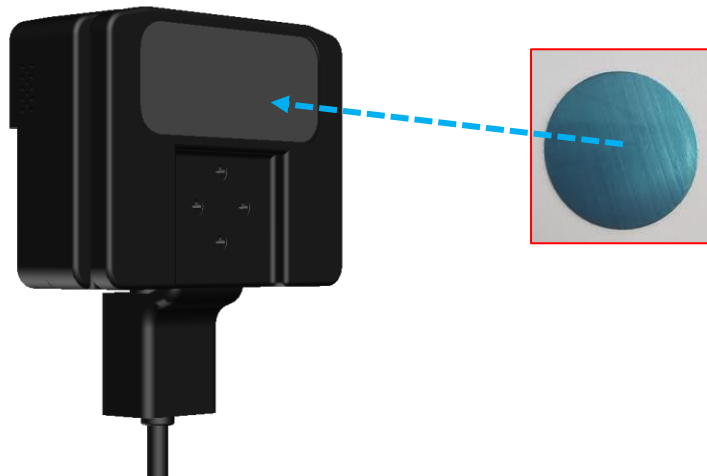
6.3 Place the Tripod Add On top of the Cable Add On so the slots are aligned.

6.4 designated slots in the back of the Cable Add On, threading into the MONARCH Camera threads, and screw in tightly.



6.5 Use the magnetic pads provided in the kit as a metal object to be attached to the magnet of the Mobile phone Add-on.

6.6 You can attach it to the back of your mobile phone or any other surface that you would like to place the camera.



8. Spectralon Add-on

7.1 The gray Spectralon has 50% uniform reflection properties in the NIR range, it's being use as a white balance reference to calibrate the object spectral response according to the illumination source reflection.

