



Thermo Scientific SPECTRONIC 200
Visible Spectrophotometer



The perfect tool
for routine measurements

Thermo
SCIENTIFIC

The Standard for Routine Measurements

Thermo Scientific™ SPECTRONIC™ spectrophotometers have served as core analytical instruments in instructional and routine analytical laboratories since 1953. The SPECTRONIC 200 spectrophotometer continues this tradition as the standard for the 21st century. It couples the simplicity and reliability of the SPECTRONIC 20 instrument with 21st century technology and bold design features that promise years of trouble-free performance.

Smart Technology, Simplicity and Speed

Smart Technology

The CCD detector measures each portion of the spectrum with the ideal integration time to account for lamp intensity and detector sensitivity. This provides the best possible photometric performance for accurate, reliable results no matter where in the spectrum a measurement is made.

Simplicity

- No need to do a zero %T measurement – the instrument does this at start-up
- No need to repeat a 100%T measurement every time you change the wavelength in Live Display mode. When you *autozero*, 100%T is recorded at all wavelengths
- Wavelength knob labeled with a λ to set or change the wavelength
- One touch printing with a USB printer

Speed

- Live measurements update every 2 seconds
- Scan from 400 nm to 900 nm in about 10 seconds

Total Control without a Computer

The stand-alone SPECTRONIC 200 spectrophotometer provides the experiment modes you use with its own controls and screen that offer:

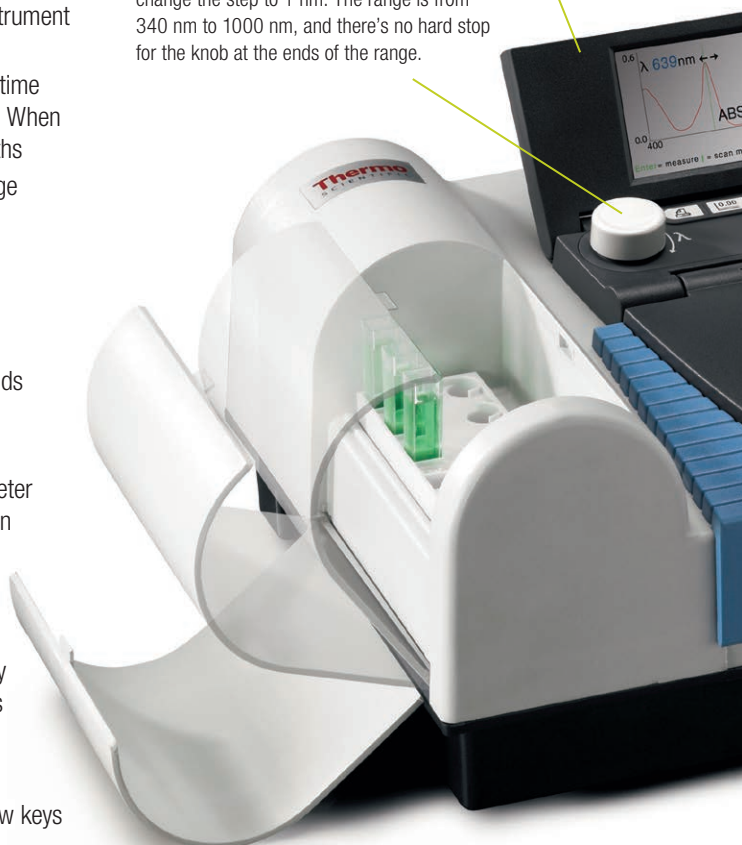
- Live display with color spectrum indicator
- Full spectrum scanning for peak identification
- Emulation of legacy instrument interfaces for easy integration into existing laboratories and protocols
- Quantitative analysis with up to four standards or a user entered factor
- Wavelength selection with the λ knob or the arrow keys
- Four point fixed wavelength measurements

Adjustable Tilt Screen

Set the screen at the perfect angle for viewing by users of all heights. Fold it down below the top level of the instrument for compact and safe storage.

Coarse/Fine Wavelength Setting

Turn the λ knob to change the wavelength in steps of 10 nm. Press it down and turn to change the step to 1 nm. The range is from 340 nm to 1000 nm, and there's no hard stop for the knob at the ends of the range.



Robust, Multifunction Sample Compartment

Whether you measure in 10 mm square cuvettes or in test tube cuvettes up to 25 mm diameter, the standard sample compartment stage adapts to be the perfect fit for your sample.



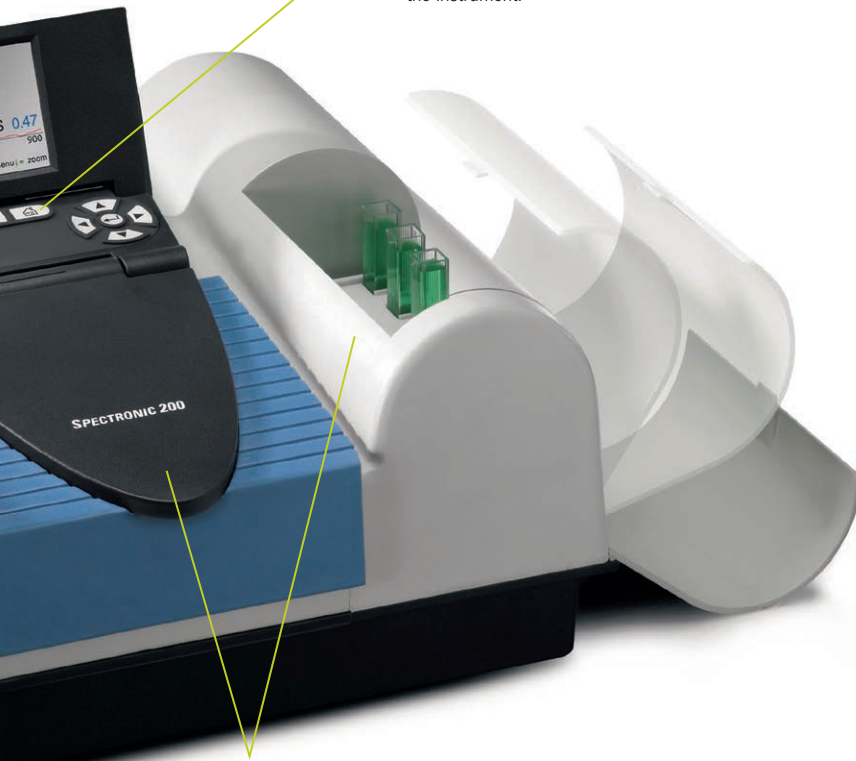
Spills happen. You can't prevent it, but the SPECTRONIC 200 spectrophotometer is ready to handle it. The sample compartment features:

- Capacity for up to 250 mL of spilled liquid
- Simple lift-out for easy cleaning in the sink
- Plastic construction to resist acid solutions
- Lid that covers the control pad and screen for extra protection when samples are being moved in and out of the compartment



Sealed Keys

Tactile rubber keypad forms a seal with the top cover to prevent spills from entering the instrument.

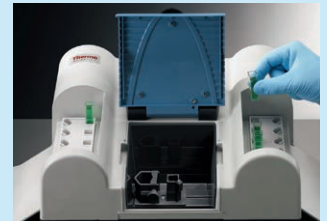


Surfaces with Purposes

All surfaces on the SPECTRONIC 200 cover slope to shed spilled liquids. Open the side doors to reveal cuvette rack shelves for sample staging during an analysis.

Convenient Cuvette Rack Compartments

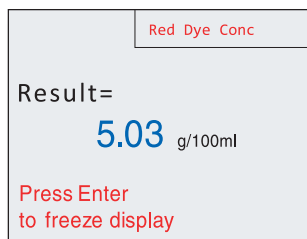
Compartments to the right and left of the sample compartment are equipped with removable cuvette racks designed to hold six square or test-tube cuvettes. Prepare your samples in a wet chemistry area and put them in a rack. Place the full rack in one compartment and the empty rack in the other. It's easy to keep clear track of which sample is which as you measure and move samples from one side to the other.



Modern On-Board Software

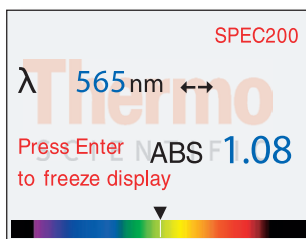
Program Standard Methods with the Analyzer Mode*

With the SPECTRONIC 200 spectrophotometer you won't need to re-enter methods every time. Simply load your Analyzer method from a USB memory stick and start working. The programmable Analyzer mode lets you choose up to four wavelengths and factors, then combine them in an equation you create. Specify your own result unit and name your method using an on-screen keyboard. The working screen shows only the method name, the result and the unit. Print the screen as a permanent record and remove the possibility of transcription and calculation errors.



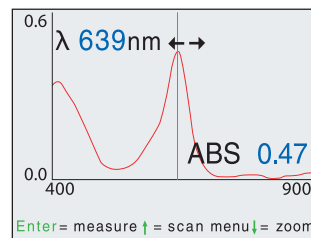
Live Display for the 21st Century

Measurement wavelength and result are shown in large clear text. A spectrum along the bottom of the screen indicates what color this wavelength represents. The display updates regularly, and you can freeze the display if desired.



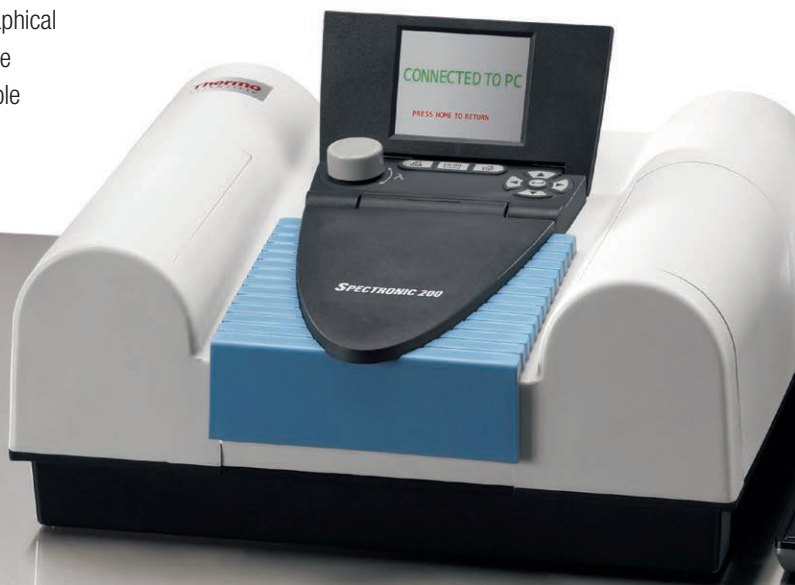
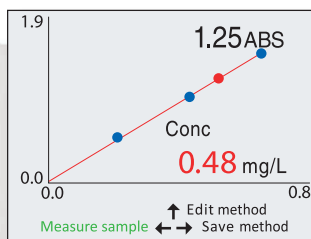
Scan

Scan a full spectrum or a defined range. Use the cursor to see precise absorbance values.



Quantitative Analysis with Standards or a Factor

Single standard calibrations are common, but if an error occurs in that one standard, it carries into all your sample data. With the SPECTRONIC 200 spectrophotometer, you can measure and plot up to four standards, with each sample data point plotted on a graph for comparison. With a graphical display of quant data, you can see whether the standards fall on a straight line, or if the sample lies outside the calibrated range.

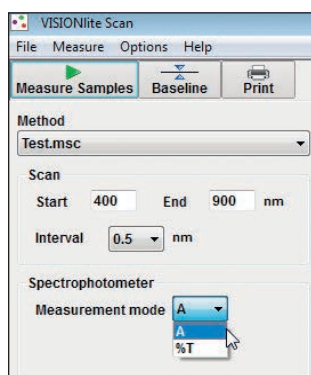
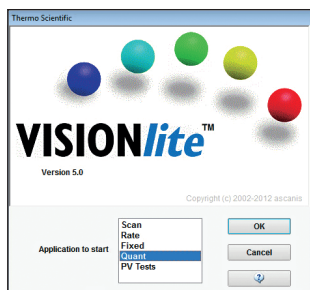


* Not included with education bundles

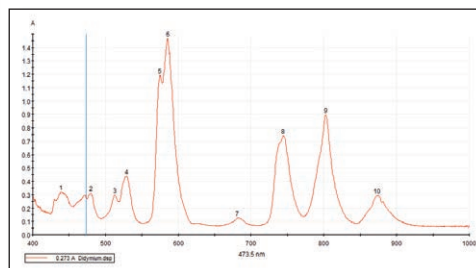
Expanded Capabilities

Full Power of the Instrument at the Click of a Mouse

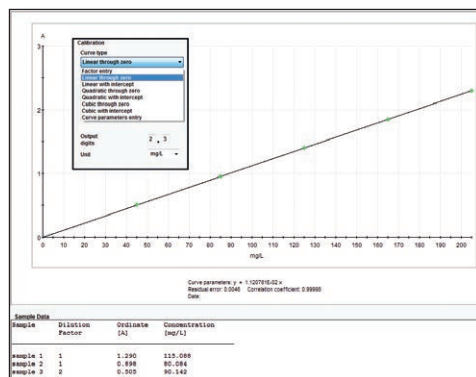
Thermo Scientific™ VISIONlite™ software offers a modern look with intuitive controls that allow you to collect, process and present your data quickly and with ease.



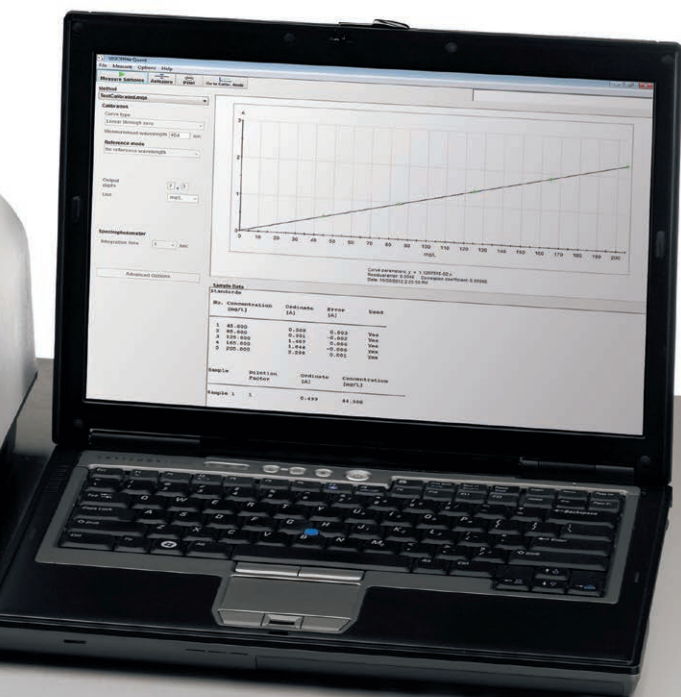
The experiment parameters are clearly displayed, offering all the settings you need to configure simple experiments. Specialized options are only a click away, easily accessible to the advanced user but hidden from the novice.



Data display is clear and concise. Graphical display includes optional peak picking and curve fitting. Data tables are displayed below the graph in a scrolling frame.



Quantitative analysis gives you flexibility to fit multiple curve types or enter a factor. Customize your data display precision and result unit. Result reports include the calibration graph, curve fit, standard solution data and experimental results.



Use Your Existing Protocols



Emulation Mode Offers Seamless Integration

Whether you are equipping a whole laboratory or adding to your existing instrument set, the SPECTRONIC 200 spectrophotometer smooths the transition from old to new technology. The SPECTRONIC 200 on-board software includes full emulation of the SPECTRONIC 20D+ control set. This allows you to continue using your current laboratory protocols and instruction sets. Plus, if budgets are tight, you don't need to replace all your instruments at once.

SPECTRONIC 20 Emulation

All data modes from this Thermo Scientific stalwart are faithfully reproduced in this emulation. Right and left arrows change mode, the knob sets wavelength, and the up/down arrows set concentration and factor for quant methods. It's just like using a SPEC 20 instrument.

	MODE →
	● ABSORBANCE
WAVELENGTH	DATA
485nm	1.19

	MODE →
	● CONCENTRATION
WAVELENGTH	DATA
615nm	71.28



The Perfect Fit – On or Off the Bench

The SPECTRONIC 200 spectrophotometer takes design for the routine or teaching laboratory to a new level. We've put the experience and knowledge gained from supporting over half a million SPECTRONIC instruments into designing an instrument that's worthy of the SPECTRONIC name and ready to serve in laboratories around the world. The SPECTRONIC 200 spectrophotometer is:

Easy to Set up

- Just plug it in and power it up
- USB connection for optional computer control

Easy to Use

- Supports cuvettes or test-tubes up to 25 mm in basic configuration
- Room-light resistant – run tall test tubes with the lid open
- Full color, variable angle LCD screen
- New scan and multi-point quant software
- Legacy instrument emulation mode
- Intuitive navigation
- Convenient coarse/fine wavelength control
- Includes cuvette racks and storage compartments

Easy to Maintain

- Sample compartment lid protects controls from spills while open
- Sample compartment contains up to 250 mL of spilled liquid and lifts out for easy cleaning
- All top surfaces slope to shed spills
- Polymer construction for chemical resistance
- No motorized parts to wear out
- Fixed grating for consistent wavelength accuracy
- Trap-door access to lamp for easy replacement

Easy to Store

- Rubber feet on the back surface let you stack instruments on a shelf like books
- Storage compartments hold your empty cuvette racks
- Removable power cable can be stored in the sample compartment





Specifications

Optical Design	Single Beam	
Spectral Bandwidth	≤4 nm	
Light Source	Tungsten-halogen	
Detector	2048 element CCD	
Wavelength	Range	340 nm to 1000 nm
	Accuracy	±2 nm
	Repeatability	±1 nm
	Data interval	1 nm
Photometric	Range	-0.3 A to 2.5 A
	Readout	ABS, %T, Concentration
	Accuracy	±0.01 A at 0.3 A ±0.05 A at 1.0 A (SPECTRONIC standard filters measured at 590 nm)
	Repeatability	±0.3 %T at 50 %T
Stray Light	<0.2 %T (with SPECTRONIC standard SRM 400 filter)	
Display	Variable angle 320 × 240 pixel color graphical LCD 7 × 5 cm, 8.6 cm diagonal (2.75" × 2", 3.4" diagonal)	
Keypad	Sealed tactile rubber	
Standard Features	Sample compartment	Lifts out for cleaning
	Cuvette racks and compartments	2 included with dedicated compartments
	Included cuvettes	1 cm plastic (quantity 10)
Standard Interfaces	USB-B for connection to a remote computer USB-A for connection to a printer or USB memory device	
Languages	On-board software in English, Spanish, French, German, Italian, Korean, Japanese, Chinese and Thai	
Power Requirements	100–240 V, 50–60 Hz (selected automatically)	
Dimensions	39 cm W × 30 cm D × 16 cm H (15.3" W × 11.8" D × 3.6" H)	
Weight	5.2 kg (11.4 lbs)	
Warranty	1 year	

Ordering Information

Description	Part Number	Optional Software and Accessories	Part Number
SPECTRONIC 200, US Power Cord	222-265700	VISION ^{lite} 5 Software, Single User License	834-091300
SPECTRONIC 200, UK Power Cord	222-265800	VISION ^{lite} 5 Software, Six User License	699-129900
SPECTRONIC 200, Euro Power Cord	222-265900	VISION ^{lite} 5 Software, Twelve User License	699-130000
		Long Path Rectangular Cell Holder to 100 mm	840-214100
		Long Path Cylindrical Cell Holder to 100 mm	840-214200
		Cuvette Rack – package of 6	222-265600
		Epson® TM-T88 Continuous Feed Printer	840-234000
		Replacement Lamp – package of 2	335423-000

www.thermoscientific.com

©2010-2013 Thermo Fisher Scientific Inc. All rights reserved. Epson is a registered trademark of Seiko Epson Corporation. All other trademarks are the property of Thermo Fisher Scientific and its subsidiaries. Specifications, terms and pricing are subject to change. Not all products are available in all countries. Please consult your local sales representative for details.

Africa +27 11 822 4120
Australia +61 3 9757 4300
Austria +43 1 333 50 34 0
Belgium +32 53 73 42 41
Canada +1 800 530 8447
China +86 10 8419 3588
Denmark +45 70 23 62 60
Europe-Other +43 1 333 50 34 0

Finland/Norway/Sweden
+46 8 556 468 00
France +33 1 60 92 48 00
Germany +49 6103 408 1014
India +91 22 6742 9434
Italy +39 02 950 591
Japan +81 45 453 9100
Latin America +1 561 688 8700

Middle East +43 1 333 50 34 0
Netherlands +31 76 579 55 55
New Zealand +64 9 980 6700
Russia/CIS +43 1 333 50 34 0
Spain +34 914 845 965
Switzerland +41 61 716 77 00
UK +44 1442 233555
USA +1 800 532 4752

Thermo
SCIENTIFIC

Part of Thermo Fisher Scientific