

# Thermo Scientific VISION/ite 5 Software

## For Visible and UV-Visible spectrophotometers

### Thermo Scientific™ VISION/ite™ 5

Software enhances the capabilities of our stand-alone Visible and UV-Visible spectrophotometers. The software lets you use your spectrophotometer to its fullest potential, displaying and reporting experimental and analytical results with ease.

VISION/ite 5 Software offers intuitive operation ideal for routine analysis and educational environments. The software can interface with these Thermo Scientific UV-Vis Spectrophotometers:

- SPECTRONIC 200
- Evolution 201
- GENESYS 30
- Evolution 220
- GENESYS 40-180
- Evolution 260 Bio
- BioMate 160

Training users to make measurements with VISION/ite 5 is simple. Controls and parameter details are always visible, inviting walk-up use for both new users and experienced analysts. Select the appropriate module and perform:

- Wavelength scans
- Kinetics experiments
- Single or multiple fixed wavelength measurements
- Quantitative analyses
- Instrument performance verification

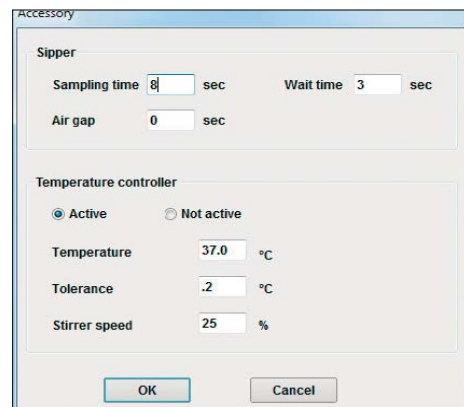
### Accessory control

Whether your experiment requires automation to enhance sample throughput or thermostating to preserve precious biological samples, VISION/ite 5 provides full control of the required accessories.

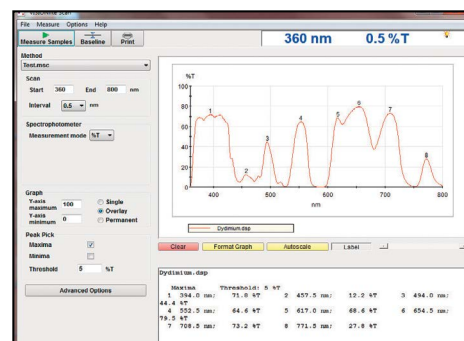
Automate your sample handling with multi-cell changer accessories for GENESYS, Biomate and Evolution products.\*

A sipper and flow cell free your technicians from the task of pouring each sample into an individual cuvette, increasing efficiency, reducing error and minimizing handling of toxics or corrosives in high throughput laboratories. The Integrated Sipper System for the GENESYS, BioMate, and the Smart Sipper System for the Evolution are fully controlled by VISION/ite 5.

Adding the Peltier Thermostatted Single Cell Holder for the GENESYS or BioMate gives you control of the cuvette temperature to a precision of 0.1 °C for optimum performance in biological, enzymatic or kinetics experiments.



Easily control your spectrophotometer accessories



Simple, intuitive controls for scanning

### New in VISION/ite 5 Software

#### Thermo Scientific™ SPECTRONIC™ 200

- Double the data resolution: 0.5 nm readout compared to 1 nm in local control
- Zoom in the absorbance axis as well as the wavelength axis

#### Thermo Scientific™ GENESYS™ 30

- Add kinetics capabilities and more sophisticated multiwavelength measurements

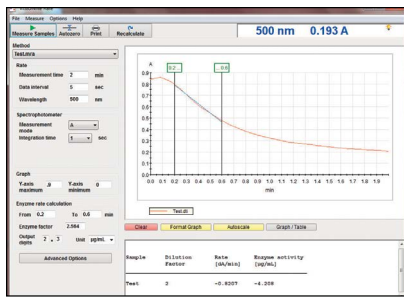
#### Thermo Scientific™ GENESYS™ 40-180,

#### Thermo Scientific™ BioMate™ 160

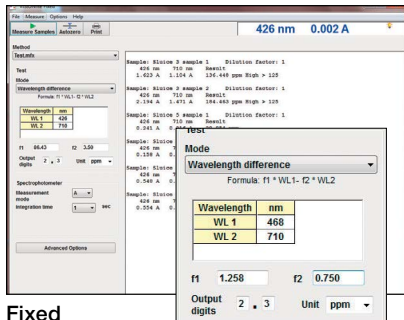
- More sophisticated over-lay and zoom
- Larger display and wider selection of data processing tools

#### Thermo Scientific™ Evolution 201, 220, and 260 Bio

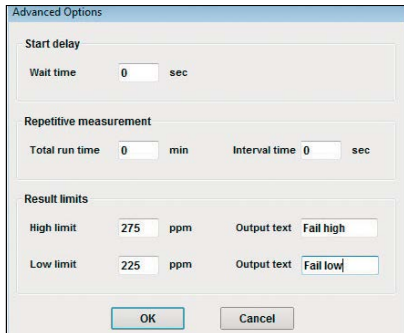
- Simplified controls for everyday users



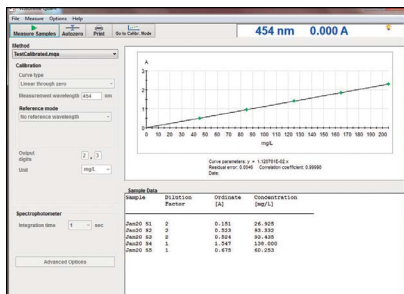
### Rate Application



### Fixed Application



VISION/ite 5 will apply QC Pass/Fail criteria automatically and print the error condition with the sample report.



### Quant Application

## Scan – high resolution spectra in seconds

Scanning with VISION/ite 5 offers several advantages over the same measurement on a local control system.

- Peak pick to identify and label wavelength peaks or valleys
- Overlay spectra for visual comparison
- Import, save or export data in native or CSV format for easy archiving and reporting
- Auto scaling of data plus simple zoom controls for detailed examination of spectra

## Rate – measurement of reaction kinetics

Add capability beyond the local control for SPECTRONIC 200 and GENESYS 30. The Rate application enables you to determine kinetic parameters by measuring the absorbance at a specific wavelength over time.

- Measure multi-cell kinetics in parallel or serial mode
- Automatic enzyme activity calculation
- Automatic data storage plus import or export your data in CSV format
- Measure up to 100 samples in a single data set

## Fixed – monitor concentration using factor methods

Program your standard methods to run with automatic calculation of the reportable result in the correct unit.

- Measure at one or multiple wavelengths
- Apply factors and equations to your data to generate results directly
- Addition, subtraction, ratio and baseline correction options
- Display results with units from a menu or define your own custom unit
- Run standard bio-tests using the pre-programmed protein and DNA methods
- Save or print results as a report, or export data in CSV format to use in a template

## Quant – determination of sample concentration based on standards

Prepare a series of standards to define a calibration curve, apply up to a cubic fit to your data, then measure samples and report concentrations based on your calibration.

- More standards and non-linear curve fitting options offer greater confidence and accuracy than can be accomplished under local control on SPECTRONIC 200 and GENESYS 30
- Choose from 11 pre-programmed reporting units or define your own
- Apply dilution factors in software to allow you to keep data for all your samples in range without doing off-line calculations
- Automatic data saving for peace of mind
- Save or print your results as a report, or export data in CSV format to use in your own template

## Performance verification

Being able to document that your instrument is giving valid data can be crucial in quality control environments. Select from the range of available Performance Verification tests that is customized to your instrument's specifications. VISION/ite 5 will prompt you to present the correct reference materials in order, and then print a complete report for your compliance file.

## Optional user interface languages

- Chinese
- English
- French
- German
- Italian
- Korean
- Portuguese
- Russian
- Spanish

## Ordering information

VISION/ite 5 Software. Includes software and operator's manual (English and German)

## Part number

834-091300

VISION/ite 5 Software and special cable to connect to GENESYS 40-180 and BioMate 160

840-312300

Interface cable for GENESYS 40-180 and BioMate 160

840-312200

Standard USB Cable (SPECTRONIC 200 and GENESYS 30)

085-820200

\* Ask your Thermo Fisher Scientific equipment distributor about additional application specific software for our spectrophotometers: VISION/ite ColorCalc – Software for color determination.

Find out more at [thermofisher.com/visionlite](http://thermofisher.com/visionlite)

**ThermoFisher**  
SCIENTIFIC